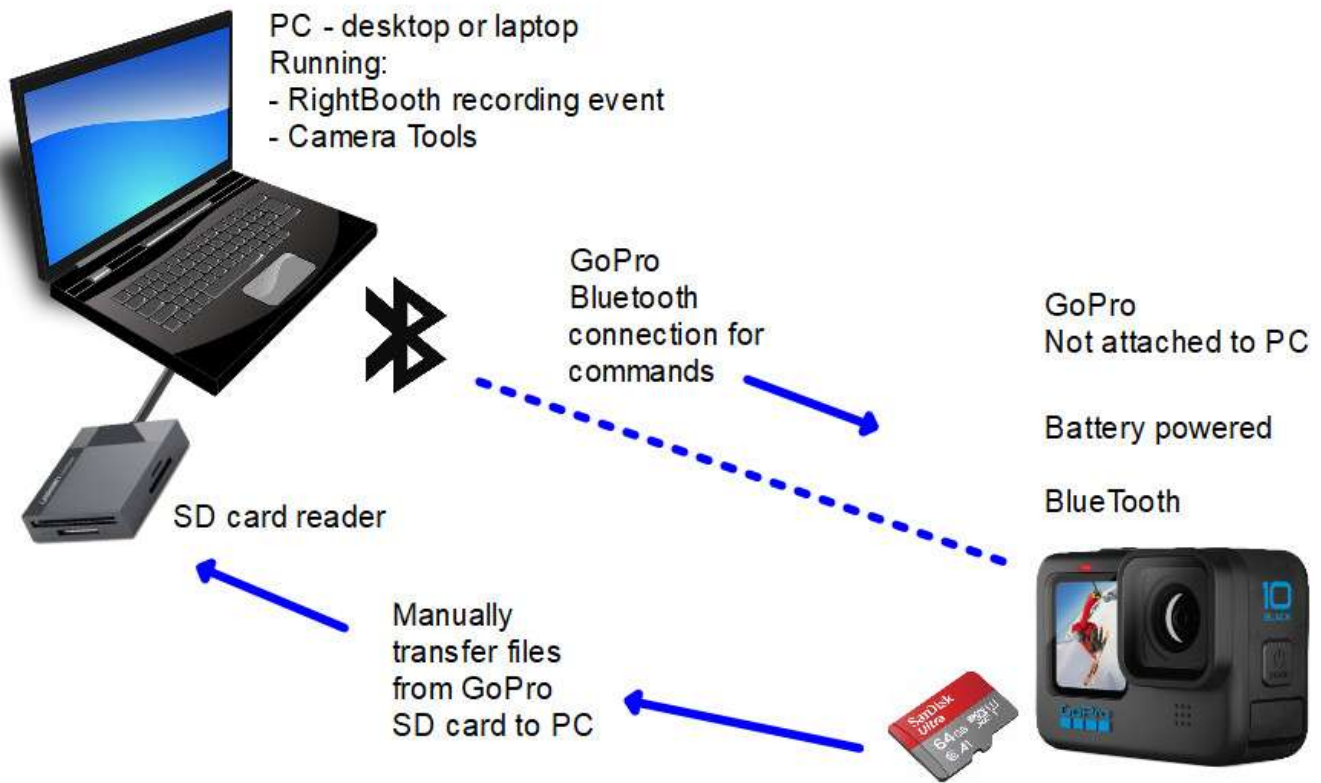


Use A GoPro in RightBooth - Bluetooth Option

This document explains how to configure a system that uses RightBooth on a desktop, laptop or a tablet PC to record videos and take photos by sending commands to a GoPro camera connected by bluetooth to the PC. The files remain on the GoPro SD card until you choose to manually transfer them to the PC for further processing.

This solution avoids the requirement to use the GoPro WiFi, which can prove to be unreliable in some environments.



Suitable For

- 360 spinner booth equipment
- Roaming video and photo capture scenarios

Supported Cameras

RightBooth can operate the following GoPro cameras by BlueTooth (via the Camera Tools app):

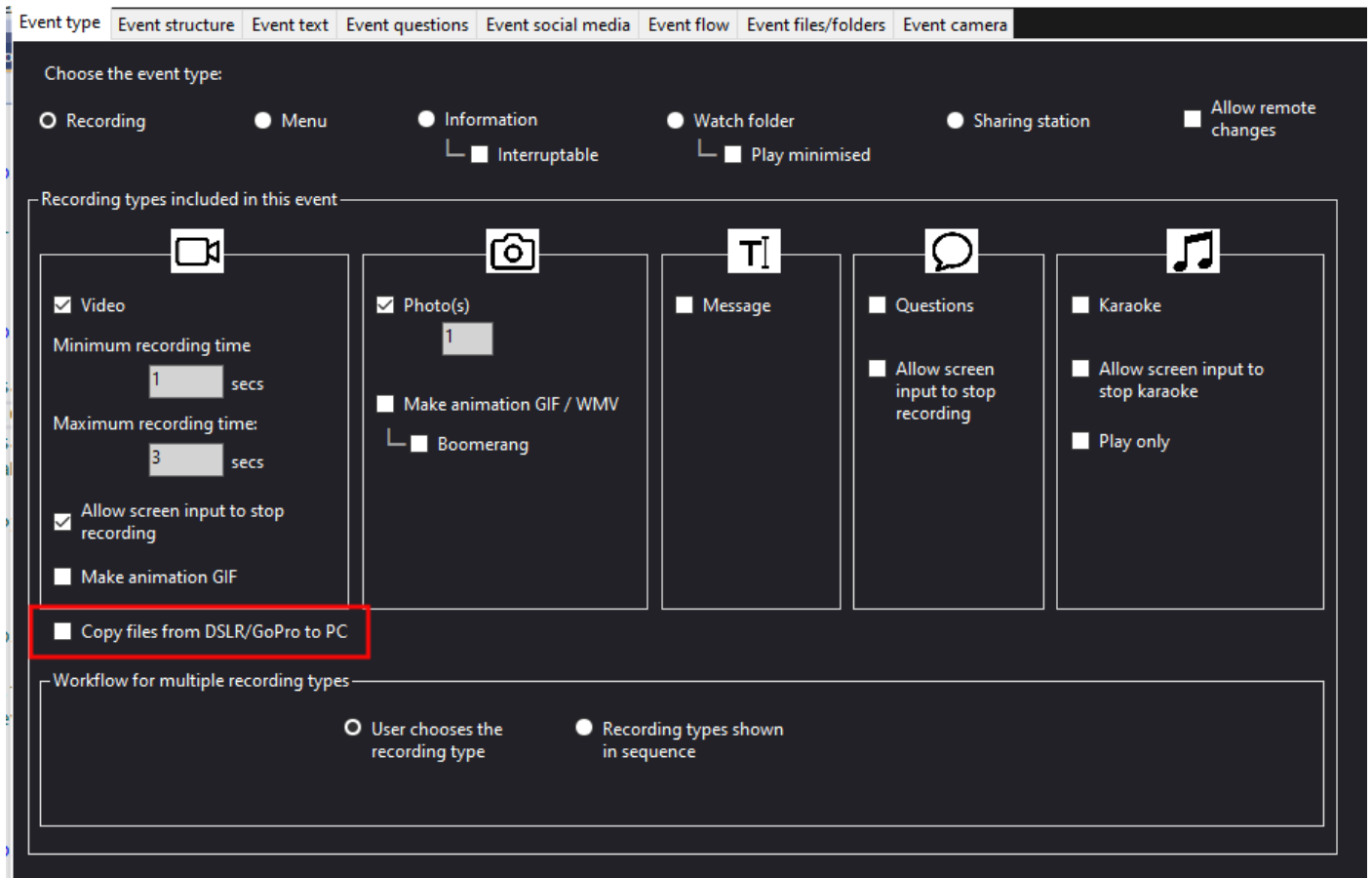
Hero 5, 6, 7, 8, 9, 10, 11, Max, Fusion, Mini

IMPORTANT: Before continuing with this document, please follow ALL the set up instructions in the Option 2 document, available here:

<https://www.rightbooth.com/gopro-options.html>

Additional Setup

- Run RightBooth. You must be running version 7.11.0 or later.
- In Event designer → Event type, untick the option: **Copy files from DSLR/GoPro to PC** :



This will prevent RightBooth from transferring the recorded files from the GoPro to the PC over the GoPro WiFi.

Your recording event will now simply instruct the GoPro to start and stop the video recordings (or photo captures) and the files will remain on the GoPro's SD card.

Transferring Files From the GoPro to the PC

Remove the SD card from the GoPro, insert it into an SD card reader on the PC. Then copy the files from the SD card to the PC and reinsert the card back into the GoPro to continue using RightBooth to make further recordings.

On some GoPro cameras it is very difficult to remove the SD card without first removing the GoPro battery, so consider attaching an SD card extender cable into the GoPro to make the process easier and to allow the GoPro to remain switched on during the process:



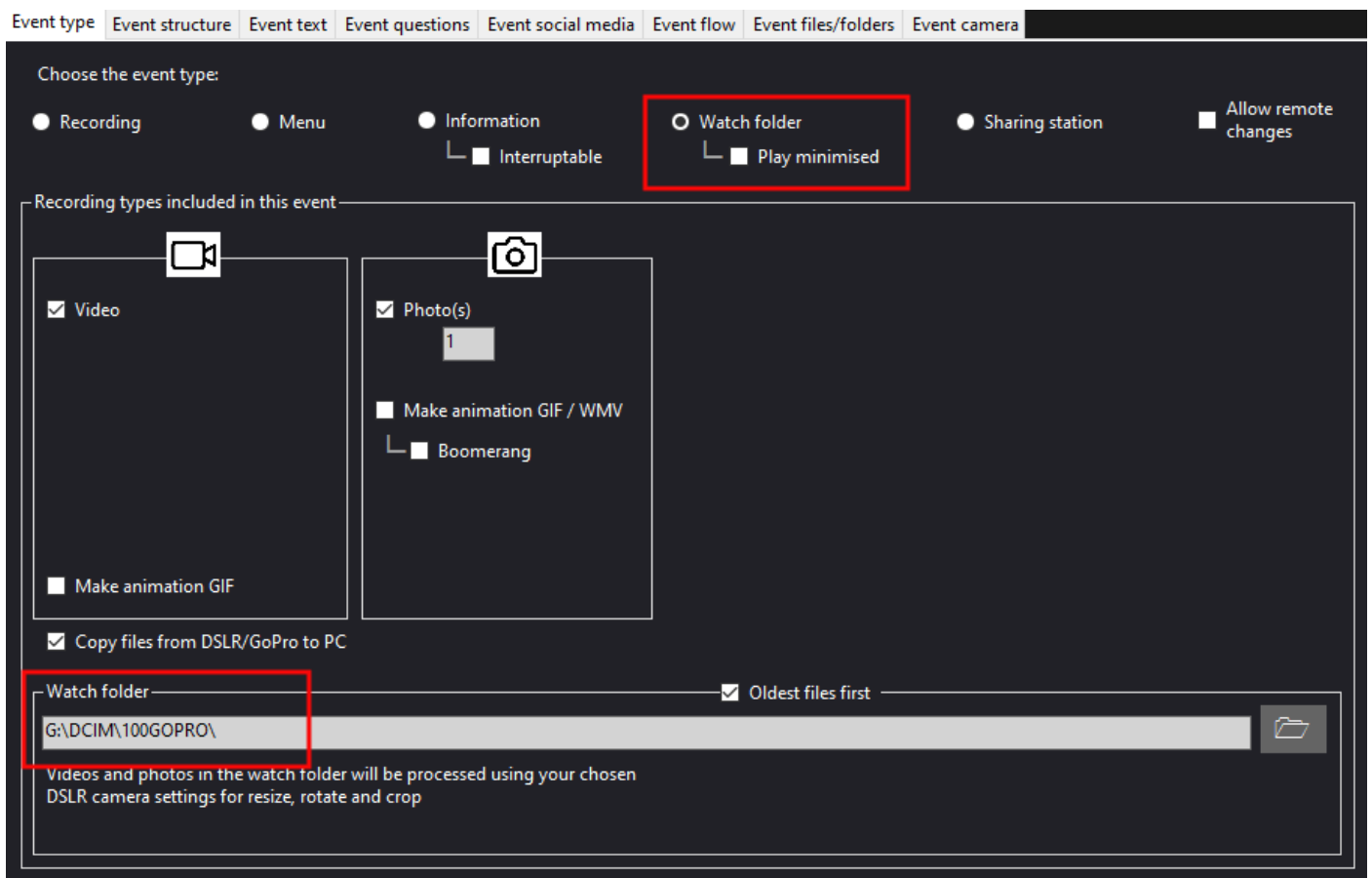
Automatically Processing Files on the SD Card

When the SD card is inserted into the PC, you might wish to have the files automatically transferred to the PC, then processed and enhanced by RightBooth.

This can be achieved by running a RightBooth Watch Folder event that is configured to watch for a folder on the SD.

Then when RightBooth detects the folder after you insert the SD card, RightBooth will process all the videos and photos on it.

In this example screenshot of a Watch folder event, RightBooth is set to watching for the folder: **G:\DCIM\100GOPRO**:



You could optionally run the Watch Folder event in a second instance of RightBooth on the same PC as the RightBooth video recording event.